

Memling

Hans Memling

c. 1430 – August 11, 1494

German/Flemish, Early Netherlandish



Portrait of a Man with a Roman Coin

The Royal Museum of Fine Arts, Antwerp, Belgium, c. 1474, 11.5” x 8.5”

Also known as, Bernardo Bembo, Statesman and Ambassador of Venice.



The Donne Triptych

The National Gallery, London, UK, c. 1470-80s, 28” x 27.5” central panel,
28” x 12” left and right panels

Also known as, The Donne Altarpiece. You might like to look online to view the front panels as well.



Triptych of Jan Floreins

Sint-Janshospitaal (Saint John’s Hospital) Museum, c. 1479, 23.5” x 30.5” central panel,
23.5” x 13.5” left and right panel

Also known as Jan Floreins Altarpiece. You might like to look online to view the front panels as well.



Selections from the St. Ursula Shrine

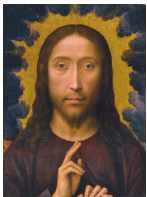
Sint-Janshospitaal (Saint John’s Hospital) Museum, c. 1489, 13.5” x 10” (each side panel),
Overall dimensions 34” x 13” x 36”



Portrait of a Young Woman

Sint-Janshospitaal (Saint John’s Hospital) Museum, 1480, 15” x 10.5”

Also known as, Sibylla Sambetha. Mentioned but not described in the PR article.



Christ Blessing

Private Collection, c. 1480-85, 15” x 10.5”

This painting is not in the PR article.