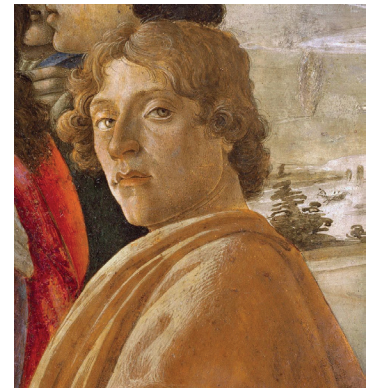


Botticelli

Sandro Botticelli

c. 1445– May 17, 1510

Italian



Self-portrait from *The Adoration of the Magi*



Birth of Venus

Uffizi, Florence, Italy, 1485, 68” x 110”



Spring or Primavera

Uffizi, Florence, Italy, c. 1480, 80” x 124”



Three Archangels with Young Tobias

The Sabauda Gallery, Turin, Italy, 1485, 39” x 50”

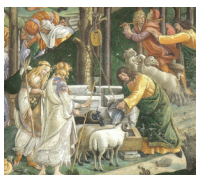
This painting does not match exactly to the details in the PR article but it is the closest representation that could be found. It was previously attributed to Botticelli and is now attributed to his student, Filippino Lippi.



Venus and the Three Graces Presenting Gifts to a Young Woman

Louvre, Paris, France, c. 1484, 83” x 111”

From the Tournabuoni Frescoes



Scene from Events from the Life of Moses

Sistine Chapel, 1481



The Calumny of Apelles

Uffizi, Florence, Italy, 1494-5, 24” x 36”

Calumny is recommended for students in Form 2 and older or parents' discretion. See the PR article.



Madonna of the Eucharist

Isabella Stewart Gardner Museum, Boston, MA, 1470-74, 33.5” x 25.5”

Students in Form 1 and younger can study this instead of Calumny. See the PR article.



Mystic Nativity

National Gallery, London, 1500, 43” x 29”