



**EUROPE**

about the middle of the  
**SIXTEENTH CENTURY**

0 100 200 300 400  
SCALE OF MILES

Hapsburg Possessions

Longitude 5° West from Greenwich 0° 5° 10° 15° East from Greenwich 25° 30° 35°

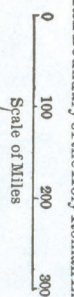
25° 30° 35° 40° 45° 50° 55° 60°

# WHEN LOUIS XIV BEGAN HIS PERSONAL GOVERNMENT 1661

## EUROPE

### ATLANTIC OCEAN

Spanish Possessions  
Austrian Possessions  
Boundary of the Holy Roman Empire



Longitude West 10

Longitude East 5 from Greenwich

Longitude East 10

Longitude East 15

Longitude East 20

Longitude East 25

Latitude 55

Latitude 50

Latitude 45

Latitude 40

Latitude 35

Latitude 30

Latitude 25

Latitude 20

Latitude 15

Latitude 10

Latitude 5

Latitude 0

Latitude 5

Latitude 10

Latitude 15

Latitude 20

Latitude 25

Latitude 30

Latitude 35

Latitude 40

Latitude 45

Latitude 50

Latitude 55

# EUROPE

after the Treaties of  
UTRECHT AND RASTATT  
1713-1714

Boundary of the Empire  
Scale of Miles:  
0 100 200 300



# FRANCE

during the Revolution

SCALE OF MILES



Longitude West 4° from Greenwich

Longitude East 2° from Greenwich

Longitude East 6° from Greenwich

Longitude East 8° from Greenwich

Longitude East 10° from Greenwich

A T L A N T I C O C E A N

B I S C A Y B A Y

ENGLISH CHANNEL

SEINE INFERIEURE

SEINE SUPERIEURE

PARIS

LYONS

ALPES

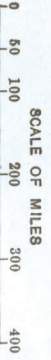
SWITZERLAND

HOLY ROMAN EMPIRE

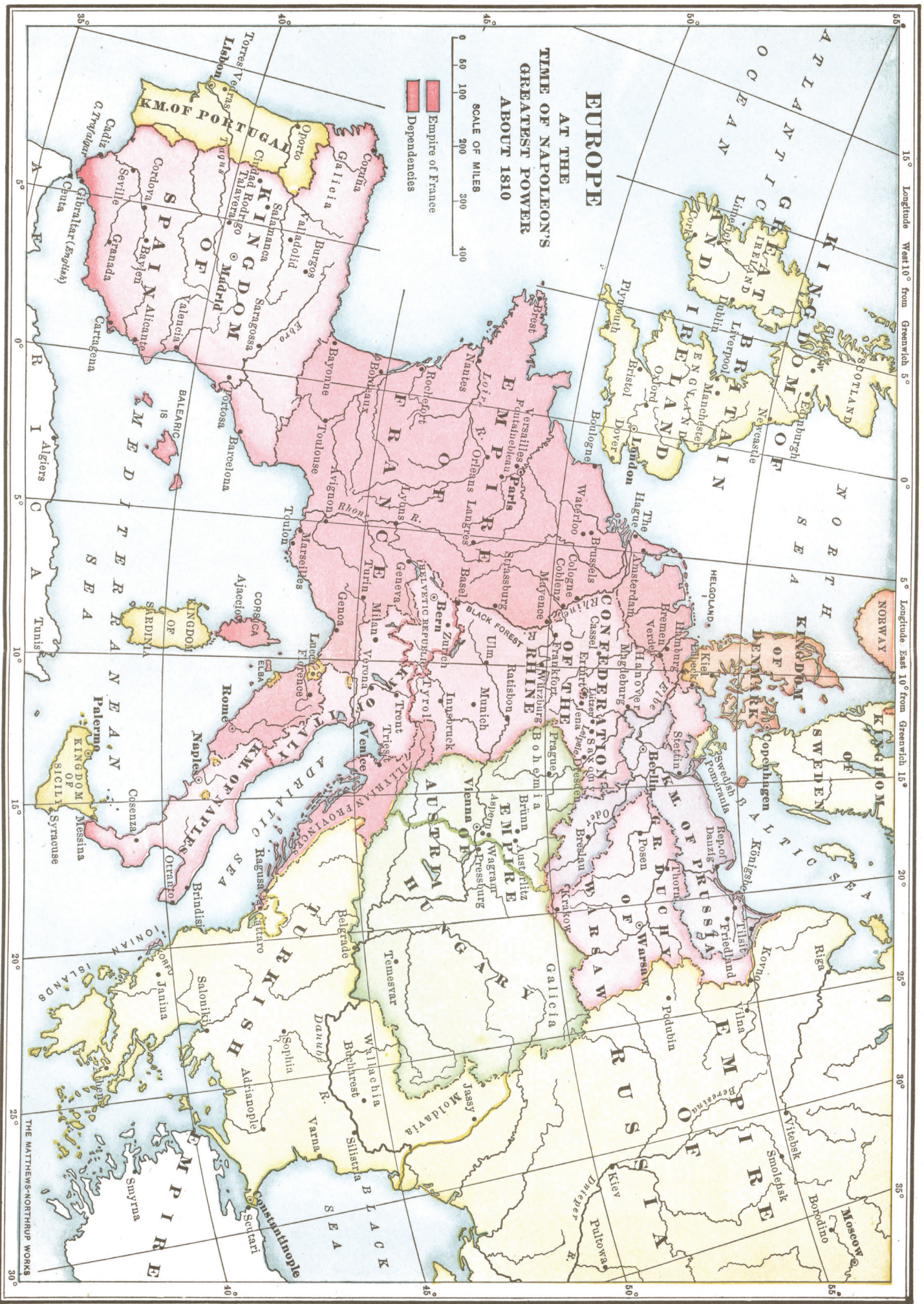
MEDITERRANEAN SEA



EUROPE  
AT THE  
TIME OF NAPOLEON'S  
GREATEST POWER  
ABOUT 1810



Empire of France  
Dependencies

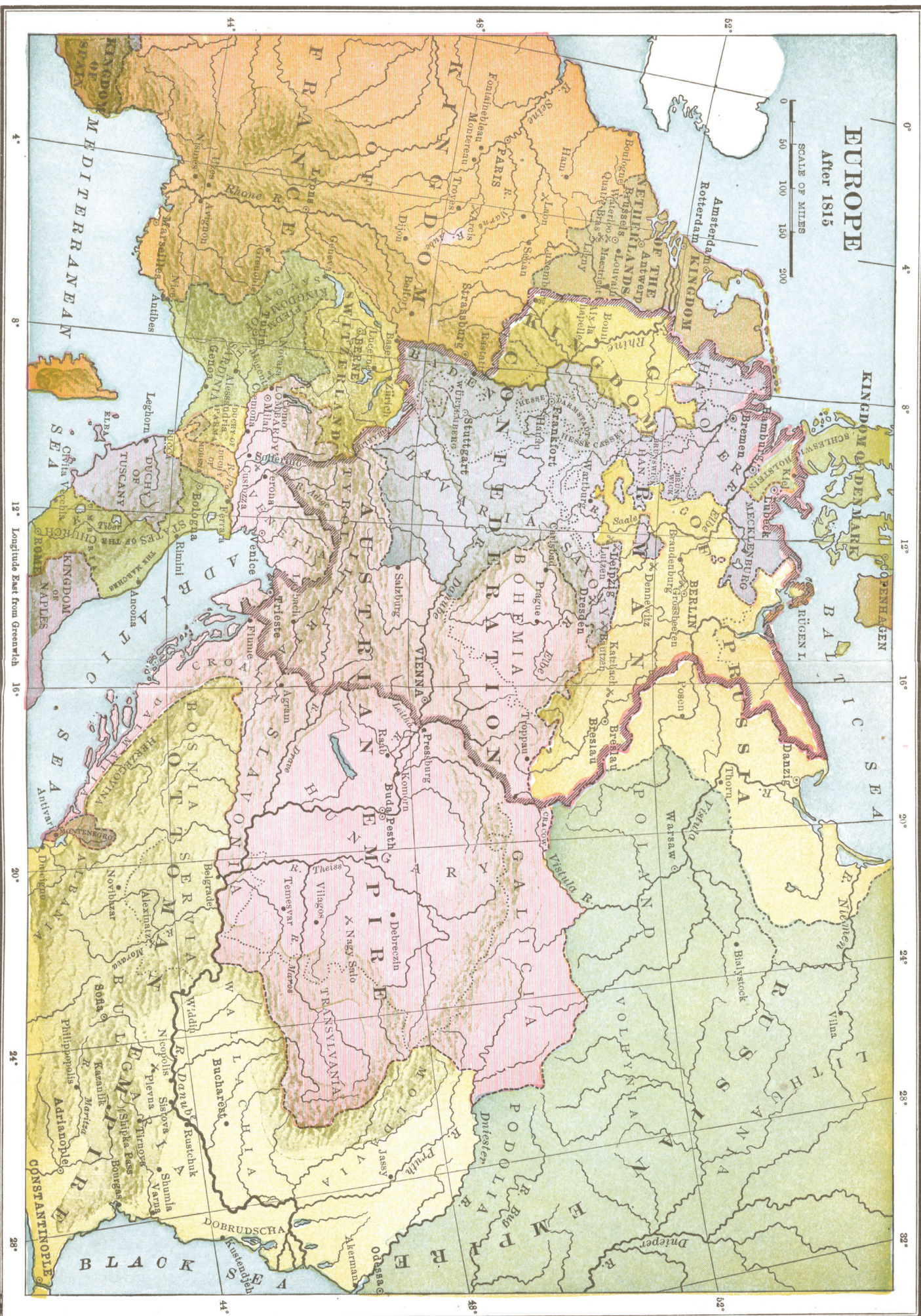
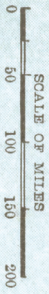


15° Longitude West 10° from Greenwich 5° 0° 5° Longitude East 10° from Greenwich 15° 20° 25° 30°

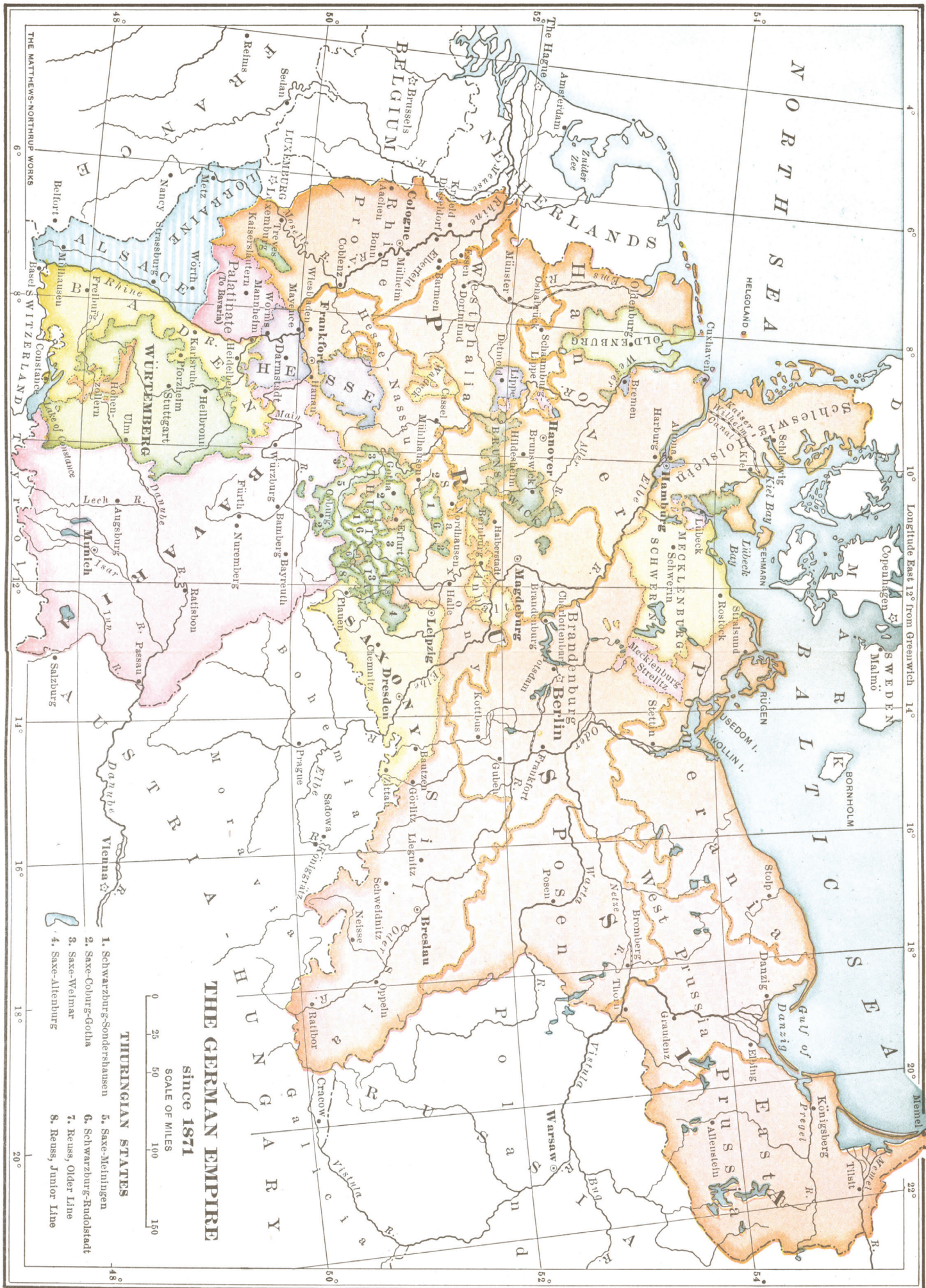
35° 40° 45° 50° 55°

# EUROPE

After 1815



4° 8° 12° Longitude East from Greenwich 16° 20° 24° 28°



**THE GERMAN EMPIRE**

since 1871

SCALE OF MILES

0 25 50 100 150

**THURINGIAN STATES**

- 1. Schwarzburg-Sonderhausen
- 2. Saxe-Coburg-Gotha
- 3. Saxe-Weimar
- 4. Saxe-Altenburg
- 5. Saxe-Meiningen
- 6. Schwarzburg-Rudolstadt
- 7. Reuss, Older Line
- 8. Reuss, Junior Line