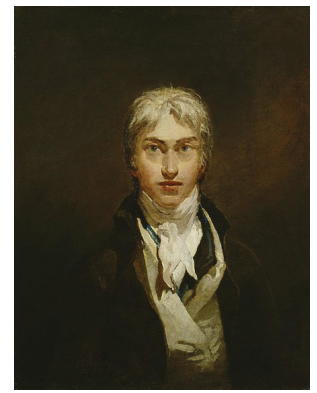


Turner

J. M. W. Turner

April 23, 1775 – December 19, 1851

English



Self-portrait c. 1799



Petworth Park: Tillington Church in the Distance

Tate Galleries, London, England, c. 1828, 24" x 57"



Frosty Morning

Tate Galleries, London, England, 1813, 45" x 69"



Chichester Canal

Tate Galleries, London, England, c. 1828, 26" x 53"



Venice, from the Porch of Madonna della Salute

The Metropolitan Museum of Art, New York, NY, c. 1835, 36" x 48"

This is most likely not the painting described in the PR article but it is similar to the description. Turner painted many scenes of Venice.



St. Michael's Mount, Cornwall

Tate Galleries, London, England, 1834, 24" x 29"



The Fighting Temeraire

The National Gallery, London, England, 1839, 36" x 48"